

Marsh Farm
Futures
working for all the community



ANNUAL REPORT 2017-2018





Chair's Introduction - April 2018

I am delighted to introduce Marsh Farm Futures 2017-18 Annual Report. This is my first year as the Chair of Board of Trustees, although I have been a member of the Board for many years. I am very pleased to say Marsh Farm Futures has performed well against our aims and objectives. We have increased our financial resources, built stronger links with partners, our commitment to local residents and support to community groups has been solid.

We embark on our 8th year with more confidence to meet new challenges. This has been possible due to our staff performance, commitment of Board members, support from our local authority, local businesses and of course our key funders including Power to Change for Empowering Places programme, Police Crime Commissioner, Young Ambassadors project, Locality/Department of Communities and Local Government (DCLG) for funding social housing feasibility studies. We are grateful to these organisations whom we regard as critical partners.

I am also very pleased to say we are able to support various groups and events including Scouts, Elders 50+, Friday Prayers Group, social gatherings, children's birthday parties, annual Christmas dinner, Summer Festival, business events through Futures Business Voice and the annual fireworks event supported by Luton Borough Council, NisaLocal and others. All of these activities are a testament to our commitment to local residents and their needs. I am very proud to say this will continue.

I have to mention a special thanks to Heywood House, a day care centre caring for Young adults with profound learning difficulties, based at Futures House who has done wonders in contributing to the local economy by creating 65+ jobs for local people (mostly young people) and continues to expand both its business and client base. They were awarded Best Business of the Year at the Annual Community Awards. We congratulate them and thank them for their services to the community.

Local residents have participated in our events and benefitted from various service providers here at Futures House, including Luton and Dunstable Sexual Health Advice service for young people, weekly Foodbank, Money Matters Credit Union and Luton Borough Council customer services. We also have other paying community groups.

Futures Fun Factory remains a popular leisure facility for children, celebrating Christmas, Halloween and birthday parties. Futures Fun Factory attracted over 55,000 customers during the year. It has also become an important employment resource for young people where 10 part-time jobs have been created and maintained.

I would like to conclude by thanking all our users, partners, funders, fellow Board members and our staff team which without their help we could not achieve all that we have during the past year. With their continued commitment I am certain that we can look to the future with confidence. I wish everyone involved with Marsh Farm Futures the very best for next year.

Anna Pedersen
Chair Marsh Farm Futures



Welcome Chief Executive April 2017-18

Over the past 12 months we have built on our past achievements with a very strong focus on the ways in which Marsh Farm Futures (MFF) can increase its contribution to its growth and services to the local community. To do this, we are focusing on our key objectives – unlocking the value of the property, i.e. Futures House, so that we can continue to provide facilities and services to the community and generate a surplus to invest in other activities.

I believe that through strong partnership working we will assist in job creation, skills development and training and the long term sustainability of MFF will rely on providing services and benefits to the residents of Marsh Farm, both through the use and letting of Futures House and through fundraising as well as the funding and delivery of current and planned projects.

I am proud of our social investment activities to support local residents and to enable access to individuals and groups, e.g. through reduced rates at Futures Fun Factory, meeting rooms, community halls at a low cost and free use of the Resource room and the PC suite. Another element of our activity is to engage through a number of community events including an annual enterprise event, Marsh Farm Summer Festival, Marsh Farm Fireworks, 50+ Christmas event, Eid and children's parties at Futures Fun Factory. We also offer local community groups/organisations small funding grants for local projects that benefit the community and is intended to build the capacity of small community organisations to become more effective enterprises operating in the area or from Futures House. In my view, these events mobilise the community, create a sense of belonging and social cohesion.

Supporting small/medium enterprises has remained an important area for MFF, e.g. we have provided learning workshops on cyber security and preparation for new legislation on GDPR. We have also initiated awareness raising around Community Business through Empowering Places Programme funded by Power to Change. One of the key objectives of the project is to build a movement towards Community Business and promote this as an economic and social change model to address local issues. Active participation of residents in the programme remains a challenge for the team.

MFF has identified a number of capital projects which will require capital investment over the next few years on its land. An initial feasibility study has been carried out to determine the most appropriate development solutions and plans will be firmed up over the coming months. Volunteers are a vital source of support to us. Community Payback (part of Probation Service, individuals who have been issued with community orders from courts) offer between 6-8 volunteers on a weekly basis providing landscaping and gardening around Futures House. Our Board members are also volunteers who offer their expertise and time at no cost to MFF. In addition, more than 80 volunteers contribute their support to our annual community and business events, mainly from Luton and the surrounding areas.

Through the hard work of the team and our Directors, we have generated a net surplus within unrestricted and restricted funds for the current year. Given the successful track record of the Charity and its programme over the past few years, the risks to the Charity are considerably reduced compared to the uncertainties faced in the earlier years.

These examples demonstrate some of the ways that MFF is supporting Marsh Farm's success and prosperity. In the coming year we will continue to build a high performing organisation, create even more value for Marsh Farm area and forge a future worthy of our past.

About us



Marsh Farm Futures (MFF) is a company limited by guarantee and registered as a charity. It is an independent and financially self-sustaining anchor organisation for the area. Marsh Farm Futures works with the local community to understand their needs, maintain their interest and enable them to play a role in initiating businesses, delivering new services and community activities in the area.

Aims & Objectives

The objectives of the Charity are to promote the regeneration in this area of social and economic deprivation to benefit the public.

The Board has agreed 5 strategic aims for the organisation and these are;

1. Provision of affordable, well-managed and sustainable facilities for enterprise and community activities
2. Development of a vibrant local economy where businesses can prosper and community enterprise can flourish, creating jobs and a skilled and competitive workforce
3. Promoting effective partnership working between all sectors to build capacity and create a sustainable community 'anchor' organisation to ensure that the needs of the community are understood and addressed
4. Support local youth programmes which develop skills and confidence engaging young people as active decision makers, and encourage a healthy, confident community who feel safe, and have a range of accessible facilities
5. Improvement in educational standards for all with a wide range of learning opportunities and experiences

Main Activities during 2017-18:

- Futures House is the key income generator – workspace remains almost full (98% of its occupancy capacity), ensuring our financial sustainability
- Room hire/conference facilities on first floor were well used adding much needed income
- 16 Community Groups use our facilities on a permanent basis
- Health Awareness days held
- Promoting business start-up; encouraging small businesses to recruit locally and be based in Futures House

Work in partnership with:

- Bedfordshire Police
- Luton Borough Council
- Power to Change
- WENTA – Business Support Agency
- Chamber of Commerce
- Luton and Dunstable Hospital
- Locality
- University of Bedfordshire
- Other Community, Voluntary and Charity organisations



Supporting local youth programmes

- Ambassadors of Change Youth Programme
- 1:1 support/counselling as and when requested from young people
- Support with homelessness
- Job Club – Support with job applications/interviews/CV's/Apprenticeships
- Fundraising memorial Football Tournament



Futures Business Voice

Futures Business Voice purpose is to:

- Inspire entrepreneurship, identify the business needs and solutions to support business growth and sustainability
- Its objectives are to;
 - a) Improve chances of employability and help strengthen the local economy
 - b) Represent the interests of the local business community and identify key issues affecting them, and
 - c) Improve individual and collective business confidence

Developing and supporting local business sector through Futures Business Voice remains one of our key objectives. This year we have focused our support on cyber security and new legislation General Data Protection Regulation (GDPR). This is one of the major changes on data protection legislation that affect all businesses and charities. GDPR event held on 14 November 2017 attracted over 30 businesses.

Futures Fun Factory

Futures Fun Factory (FFF) is an indoor soft play area. It provides opportunities for children to have fun, play and do physical exercise. Futures Fun Factory has created employment opportunities for 10 local young residents who are members of FFF staff team. Futures Fun Factory offers Marsh Farm residence discount days, after school discount days, childminder discount morning, children's birthday parties, themed parties throughout the year including Easter, Summer, Eid, Halloween and Christmas. It also offers private hire for schools, social groups (scouts, brownies etc.) and charity groups. More than 55,000 customers have visited Fun Factory during the year.



Community Resource Room

Marsh Farm Futures offers an IT facility/Community Resource Room with free internet access and printing facilities to the local community.

This popular service gives residents who would not otherwise have access to use a computer/internet/email for job searches or other internet related work. It is available for use from Monday – Friday, except where pre booked for training or support services. More than 1060 local residents made use of the facility during the year.





Fundraising

MFF invested staff time on securing funding from Power to Change during 2017/18. This resulted in securing over £98,000 for Community Businesses. The first year of the programme has been about building MFF capacity as the catalyst, establishing the peer network and developing a five year plan for the area.



We have been working closely with Locality, raising over £4500 for consultancy with Urban Vision which then led to raising further £10,000 from DCLG to conduct a pre-feasibility study to extend Futures House and also develop social housing ideas.

In addition, we applied to the Police Crime Commissioner (PCC) funding and we were awarded £30,000 for our Ambassadors of Change Programme. The annual fireworks fundraising also generated sponsorships and financial contributions from local businesses to cover costs; £5,000 in funding was raised for this event.

Partner Services

Throughout the year Marsh Farm Futures provided a number of services to local residents including:

Luton Rights

Weekly FREE legal advice on personal debt, employment, benefits. Over 82 local residents have accessed the service.

Luton and Dunstable Hospital

Free confidential advice, information, support, contraception and pregnancy testing to young people. More than 106 young people have used the service during the year.

Luton Borough Council Customer Service

This is another partner service available to residents Tuesday and Thursdays from 9.00am to 5.00pm. Over 700 people have sought help, advice and support this year.

Foodbank

Outside community vegetable garden at MFF that provides fresh produce to Luton foodbank. 272 vouchers were redeemed at Futures House and this gave food to 659 people.

Meeting Halls

Over 27,227 customers have used Meetings Halls for various purposes including weddings, birthday parties, prayers, exercise classes and business meetings.



Area North Festival

This is an annual free event hosted by MFF at Futures House that offers the local community a Fun day with music and other attractions. It helps create a sense of togetherness, belonging, cohesion and a great family day out. This event attracted over 800 people this year.

Marsh Farm Fireworks

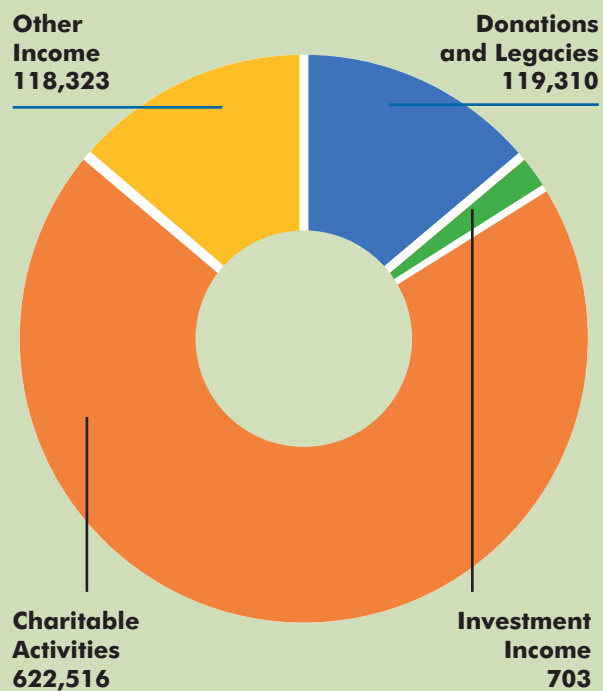
Another annual event attracted more than 4,000 people from Marsh Farm and Luton wide. Funding and sponsorship opportunities are created for local businesses demonstrating their commitment to the local community.

Futures Community Voice (FCV)

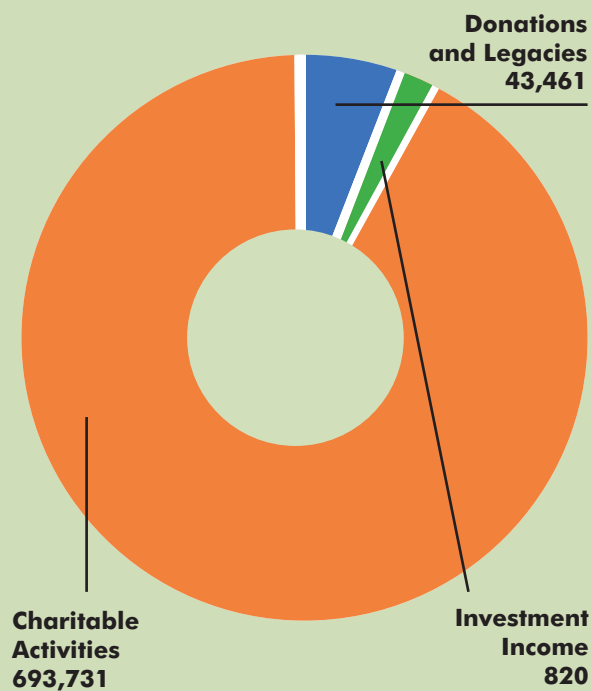
This is a platform for local residents to articulate their needs. The group is made up of local residents who volunteer their time. FCV identifies residents' main issues and concerns of the local community. They have successfully applied for £30,000 (over two years) funding from the Health Trust Lottery. The project is to improve four of the subways on the estate and 16 street makeovers. FCV engages with different partners and agencies including Luton Borough Council and other local community organisations.



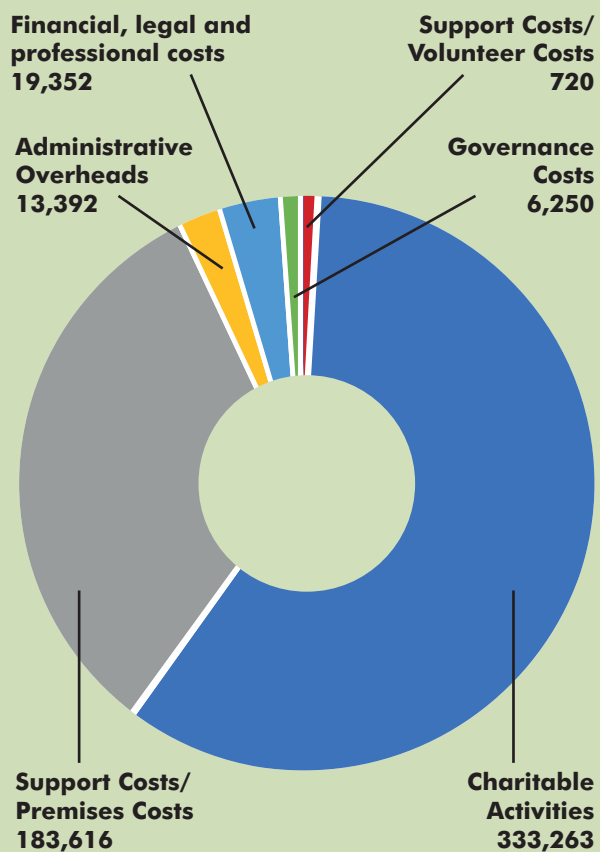
Income and Endowments 2017/2018 (£)



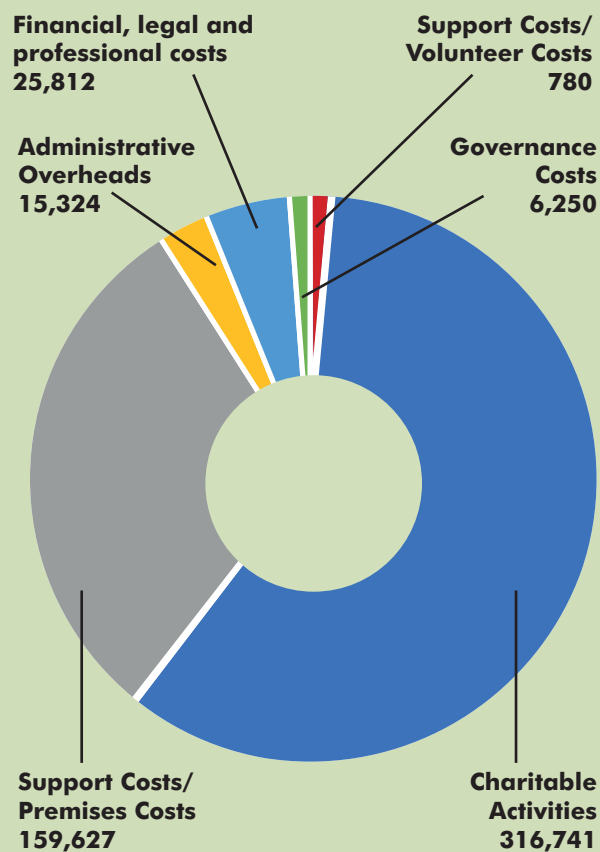
Income and Endowments 2016/2017 (£)



Expenditure 2017/2018 (£)



Expenditure 2016/2017 (£)



Meet the Board

Anna Pederson Resident/Chair



Anna is the Chair of MFF, a local resident and Councillor. Anna is actively involved in the community and comes with many years' experience in HR.

Dave Crean MBE Joint Vice Chair Resident



Dave is Joint Vice Chair and has lived in Marsh Farm since 1990. He is committed to positive change and a brighter future for all the residents of Marsh Farm.

Abdur Rahman Khan Joint Vice Chair Local Stakeholder



Abdur Rahman Khan is the Vice Chair and has been involved in voluntary and community sector for many years. He has a wealth of experience in community development and education.

Roy Davis Local Councillor



Roy has been a Borough Councillor for over 30 years. Facilitating discussion and decisions for the organisation.

Stephanie Power Resident (Appointed 29/1/2018)



A local resident of Marsh Farm for 20 years. Stephanie has been actively volunteering for the past 5 years around Luton.

Annette White Business Representative



Annette is a local resident and a successful business woman. She has over 20 years of sales and marketing background from a Corporate Global entity and has over 10 years of experience of running her own independent small IT business.

Bhavesh (Barry) Patel Local Business Representative



Barry is a local businessman who owns and runs large retail stores. His business Nisa Local employs more than 15 people – all are local residents.

Aimi Rix Resident (Resigned 7/8/2017)



A local resident with 20 years of business management experience within the building and restoration trade. Also a local artist, Aimi has worked alongside many sectors to deliver high-end installation and art works.

Louisa Boateng Resident (Resigned 29/1/2018)



A local resident with experience of working with Children Services and a parent governor at a local nursery.

Meet the Team

Mohammed Rafi **Chief Executive**



Rafi has the overall responsibility for all areas of MFF work including financial management, business development, Governance, HR and community engagement. Rafi has previously worked as a director for a management consultancy and Chief Executive with a number of regeneration partnerships in London and the surrounding Boroughs.

Ishaq Kazi MBA, FCIM **Programme Manager**



Ishaq joined MFF in January 2010 and has overall responsibility for developing partnerships and projects, including the programme of delivering on outputs and outcomes, income generation and engaging businesses. Previously worked in London for local authorities, community and private sector for more than 20 years.

Robert Debont **Facilities Manager**



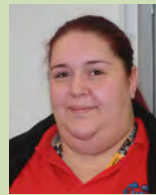
With over 10 years' experience in retail and private sector. Robert possesses expertise in IT and Facilities management. He has been with MFF since November 2015 and has sole responsibility for Futures House maintenance, health and safety and tenant matters.

Yasmien Gordon **Futures Fun Factory** **Deputy Manager**



Yasmien joined Futures Fun Factory in February 2011 as a casual support and has worked her way up to manage the day to day responsibilities of the Fun Factory.

Lyndsey Crossley **Futures Fun Factory Manager**



Lyndsey joined Futures Fun Factory in February 2011 as a casual support and has worked her way up to manage the day to day responsibilities of the Fun Factory. She has experience of working with children in a nursery previous to this.

Cathy McShane **Community & Youth Involvement** **Manager**



Cathy joined MFF in July 2013 and has over 25 years' experience working with local authority. Cathy manages youth initiative, local community involvement and funding. She also works closely with Futures Community Voice and Futures Fun Factory.

Selina Okoli **Admin Officer**



Selina joined MFF in August 2014 to provide admin support and manage the MFF office. She has over 18 years' experience of working with the Metropolitan Police Service including Customer Services, Administration and Press and Communications.

With Special thanks to Marsh Farm residents, Board Members, Partners, dedicated staff & Volunteers.





Contact Us

For further information or if you have any comments or suggestions
please contact Marsh Farm Futures on 01582 512555

Website: www.marshfarmfutures.co.uk

Email: info@marshfarmfutures.co.uk

Registered office:
Marsh Farm Futures
Futures House
The Moakes, Marsh Farm
Luton
LU3 3QB



@marshfarmfutures



@marshfarmfutures

Registered Charity Number. 1138854
Company Registered Number. 6853242

With Special thanks to
Marsh Farm Residents, Board Members, Partners,
Dedicated Staff & Volunteers

