

FUTURES NEWS

Community Business comes to Marsh Farm Futures - vote of confidence from Power to Change



power to
change



LOTTERY FUNDED

Marsh Farm Futures (MFF) has been selected by Power to Change, under its Empowering Places Programme, to deliver activities focused on setting up community businesses.

In January 2017 MFF was able to secure a Learning Grant of almost £10,000 from Power to Change Trust to consult locally and assess the potential for setting up community businesses in the area.

The Learning Grant enabled MFF to hold 'Community Conversations' in April 2017 with over 15 organisations/stakeholders and young people from the area. Individuals representing various organisations included Penrose Roots, African BME Association, Money Matters Credit Union, Home Instead, Luton Borough

businesses in the area. MFF were successful and have now been awarded a grant of £98,000, for the first year. The programme is intended to run over a five year period.



Community Business – Learning Grant

Consultation with community organisations taking place.

The agreed purpose of the grant is to:

- Identify and develop individuals/groups that have the potential to set up locally based community businesses.
- Develop good relationships with stakeholders and partners and engage and build community capacity
- Engage actively in the Empowering Places Programme

Mohamed Rafi MFF Chief Executive commented:

"Our vision for Empowering Places Programme not only includes community business in the area developing clusters of activity but also transforming local services for the benefit of residents over the next 5 years. By businesses working closely through local networks whether it's family, friends or other businesses it will bring opportunities from many directions and enable decision making back into local communities. This we believe will bring people together to solve local problems for themselves. We are very excited to be a partner in this programme with Power to Change".

Continued on page 2



Young people participating.

Council, Luton Harmony, Disability Resource Centre, Futures Community Voice, Osagyefo Theatre and others were present and contributed to the discussion on how their organisation could participate.

The completion of the initial project successfully led to the submission of a further detailed application to Power to Change, an independent charitable trust that supports and develops community businesses to create better places across England. MFF was then required to deliver a robust presentation to Power to Change panel in Leeds on 24 April, stipulating the case for funding Marsh Farm Futures to deliver a programme of activities to establish community



Continued from page 1

Ishaq Kazi, Programme Manager, responsible for the delivery of the project said: "I am delighted that Power to Change has selected us as one of the seven organisations in the country, to deliver Empowering Places Programme. This is clearly a resounding vote of confidence in our proposal and recognition of our commitment to partnership working and engaging the local community. This is a great and timely initiative, it will support one of our strategic objectives - engaging the local community. I am really looking forward to initiating and running the project.

Sian Herschel, Head of Place at the independent Trust Power to Change, said: "We are really excited about teaming-up with Marsh Farm Futures, to help people in Luton come together and get great local ideas off the ground. It is an area full of potential and we can't wait to get started".

Marsh Farm Futures as part of the requirement, will hold consultation events with community groups, residents and partners to discuss and generate ideas on community businesses, recruit and train participants on entrepreneurial skills and work towards setting up community businesses that will trade in the market place.

What is a Community Business?

A community business is an entity, formed when communities identify, recognise collectively the challenges they face and come together to address them. Community businesses are run by and for the local community. They operate in a wide range of economic sectors and are accountable to their community. Furthermore the profits they generate must deliver positive local impact.

Research conducted, during 2016 by Power to Change Research Institute, shows there are over 7000 such

businesses in England; they employ over 36,000 people and generate more than £1 billion of income yearly. The number of these organisations is increasing, and they are taking on growing numbers of local assets such as libraries, community centres, parks, and sports facilities.



Sian Herschel – Head of Places at Power to Change



Features of a community business are:

- **Locally rooted:**
They are rooted in a particular geographical place and respond to its needs. For example, that could be high levels of urban deprivation or rural isolation.



Participants from African (BMES) Community Association



Community organisations participating.

- **Trading for the benefit of the local community:**
Their income comes from things like renting out space in their buildings, trading as cafes, selling produce they grow or generating energy
- **Accountable to the local community:**
They are accountable to local people and have a voice in the business's direction.
- **Broad community impact:**
They benefit and impact their local community as a whole. They often morph into the hub of a neighbourhood, where all types of local groups gather, for example to access broadband or get training in vital life skills.

Next steps

1. Identify and invite partner organisations/community groups to a roundtable discussion to:
 - Explain fully about the programme and Power to Change requirements.
 - Identify how this programme fits/links within their organisations.
 - Establish their interest/role/ responsibility and explore their potential contribution.
 - Formulate a strategy, secure their commitment, support and agree their actions.
 - Date for this roundtable discussion to be announced.
2. Arrange dates for public awareness and recruitment events:
 - Prepare publicity/marketing material for local residents to participate in the programme.
 - Hold public/community groups awareness event

Key Actions Planned

Over the next twelve months MFF will:

- Aim to engage community groups and local residents to participate in discussion and generation of ideas.
- Hold key events to create momentum, and inspire people to engage.
- Sign up partner organisations, local community groups and residents to be part of movement building towards Community Business.
- Hold 2 workshops to recruit 10 delegates to learn community business/entrepreneurship skills.
- Work towards creating and setting up at least one community business that will continue to trade after 12 months.
- Work towards acquiring a building/community assets that can be utilised for community purposes.

More information on this major initiative will be provided through our website
www.marshfarmfutures.co.uk
 and leaflets and newsletter.

If you are interested in joining the initiative, please email Ishaq Kazi Programme Manager:
ishaq@marshfarmfutures.co.uk



Haywood House wins Community Business of the Year 2017



From Right to left: MFF CEO Mohammed Rafi, Annette White MFF Director, Ian Cording Chair Federation of Small Businesses Co-sponsor, Dave Heywood, Clare Heywood, MFF Chair, Roy Davis and Programme Manager Ishaq Kazi.

Heywood House, a Day Care Centre for young adults with profound and complex learning difficulties and one of the larger tenants at Futures House, was the deserving recipient of the Community Business of the Year Award at the annual Luton and Bedfordshire Community Awards held on Friday 13th October 2017.

The annual awards show is in its 8th year now and is supported by businesses and organisations in Bedfordshire. Marsh Farm Futures are one of the proud sponsors of the event and this year sponsored the Community Business of the Year award.

Dave Heywood, from Heywood House said: "It is an honour to receive this award on behalf of all the hard working staff at Heywood House. Futures House has given us the opportunity to develop and grow, establishing

meaningful relationships with local businesses and the wider local community. Heywood House is a lifeline to many of our families and we are grateful for the support we have received from all."

Speaking after the event, Marsh Farm Futures Chief Executive, Mohammed Rafi, said: "Heywood House were nominated for this award by Marsh Farm Futures, who have supported them since their inception. I am very pleased that Heywood House have been recognised for their work and achievements in the local community. Not only are the majority of the staff they employ from the Marsh Farm area, they are also exemplary tenants at Futures House." On behalf of the board of directors and staff I would like to give my congratulations to Clare, Dave and their team."

New shopping parade now open



Following the successful launch of the new shops and the imminent occupation of the new flats above, attention is turning to the next phase of the redevelopment now that the Purley Centre is vacant.

The new hoarding is now being erected around the site to ensure that demolition works can be done safely. This will restrict parking for residents and shoppers but it is necessary for the project to move forward. The physical demolition of the building will commence in mid to late November once the building has been cleared and services (electricity, gas & water) have been disconnected. Some parking has been retained at the Purley car park for visitors to the health centre and this will remain until the new access to the health centre has been provided via Vadis Close.

The demolition will be carefully monitored and the contractor has been tasked with minimising disruption and

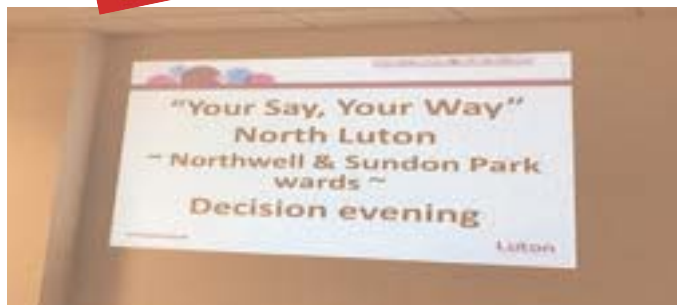
settling any dust that is created during the works. It will cause noise & some disruption to local residents but hopefully this can be kept to a minimum. The building will be demolished by large long reach machines which will 'pick' at the structure at high level from each end. The rubble created will be crushed on site for use where possible on phase three of the development. Demolition will be completed by January 2018 and then, subject to formal planning approval, work will commence on phase three of the project which will eventually provide a further 93 houses and flats. Demolition will be restricted to normal working hours Monday to Friday.

If you have any issues or problems associated with the demolition works please telephone Luton Borough Council on 01582 447600

Area North Summer Festival held



MFF's annual summer festival held on 19th August attracted around a thousand residents and supported by partners including Luton Borough Council Keepmoat, Signposts and others.



NORTHWELL AND SUNDON PARK DECISION DAY

The new round of Your Say Your Way Funding has once again been underway across Luton. Northwell and Sundon Park's decision evening was held on Monday 23rd October, here at Futures House where 7 worthy community Projects were awarded funding. The projects ranged from working with children and young people, to the elderly and those living with Dementia, and will be delivered in the Northwell and Sundon Park Wards.

DECISION DAY BRAMINGHAM, ICKNIELD & LIMBURY

The decision day for Bramingham, Icknield and Limbury was held on Saturday 11th November 1 – 4pm, here at Futures House. For further details contact Cathy McShane on 01582 512555 or email: cathy.mcshane@luton.gov.uk

Open Days in the community Improve your skills and job prospects

Visit us for information, advice and support about our courses

Futures House, Marsh Farm

Monday 20 November, 11am - 1pm

Farley Hill Community Centre

Monday 20 November, 1.30pm - 3pm

Lewsey Farm Community Centre

Tuesday 21 November, 11am - 1pm

The Central Library

Tuesday 21 November, 1.30pm - 3pm

***Registrations will be available on the day.**

Courses available include: English for Speakers of Other Languages, Sport and Fitness, Beauty & Holistic Treatments, Care courses (Child Care and Health and Social Care), Teacher Training, Paediatric First Aid, Security guards, etc.

To find out more, contact

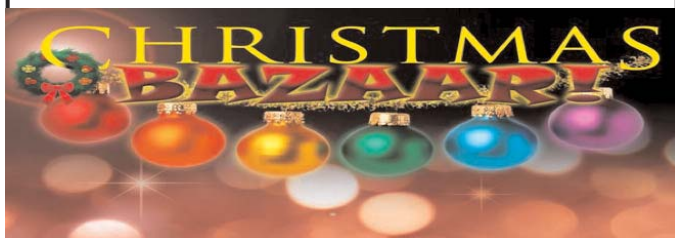
Elena Keys 07990 523452

elena.keys@barnfield.ac.uk



barnfield.ac.uk

MFF presents Xmas Bazaar



9.00am to 3.30pm
Thursday 14 December 2017
For Stalls booking contact:
Robert Debont
Tel 01582 512555
Email:
facilities@marshfarmfutures.co.uk

FUTURES FUNFACTORY
WEEKDAY ACTIVITIES

Monday to Friday (Term-Time) Suitable for 1-4 years old

10:00 - 12:00

MONDAY	Story time with Art and Crafts Join us for a relaxing, magical story time alongside themed arts and crafts. £4.00
TUESDAY	Messy Play Join us and get stuck in with our messy play activities for children that will explore different textures and ensure that they enjoy their experience to the fullest, please ensure that appropriate clothing is worn. £3.50
WEDNESDAY	Arts and Crafts Working together to have fun with arts and craft. £4.00
FRIDAY	Musical Mayhem Join us for some fun and create your very own music. £3.50

All activities include the use of the play frame.
Price includes entry for one adult and one child, any additional adults will be required to pay general admission fee.

Business Administration Apprentice

Marsh Farm Futures are seeking to recruit a Business Administration Apprentice. Working at Futures House, this role is ideal if you would like to gain a thorough grounding in Customer Services and Administration.

To find out more and to apply please email
fahmida.sultana@barnfield.ac.uk or call 01582 569869

CLOSING DATE: Friday 24 November 2017 at 5pm

Marsh Farm Futures are seeking to recruit a

Caretaker

17.5 hours per week - £8 - £10 per hour

You will assist in providing quality maintenance of Futures House, ensuring that the building runs smoothly.

For job description visit www.marshfarmfutures.co.uk

Please send a CV and covering letter to
sokoli@marshfarmfutures.co.uk or call 01582 512555 for more information

CLOSING DATE: Thursday 23 November 2017 at 5pm



**Heywood House – are recruiting for various vacancies including
Care Assistant, minibuss drivers.**

Contact Dave Heywood on 01582 848288

Funding News

Small funding grants for Community Groups

Are you a community group looking for a small amount of funding from £100 up to £1,250?

Do you have a Constitution/Terms of Reference,

Group Bank Account & Equal Opportunity Statement?

Then you could be eligible to apply for Marsh Farm Futures Community Chest Funding

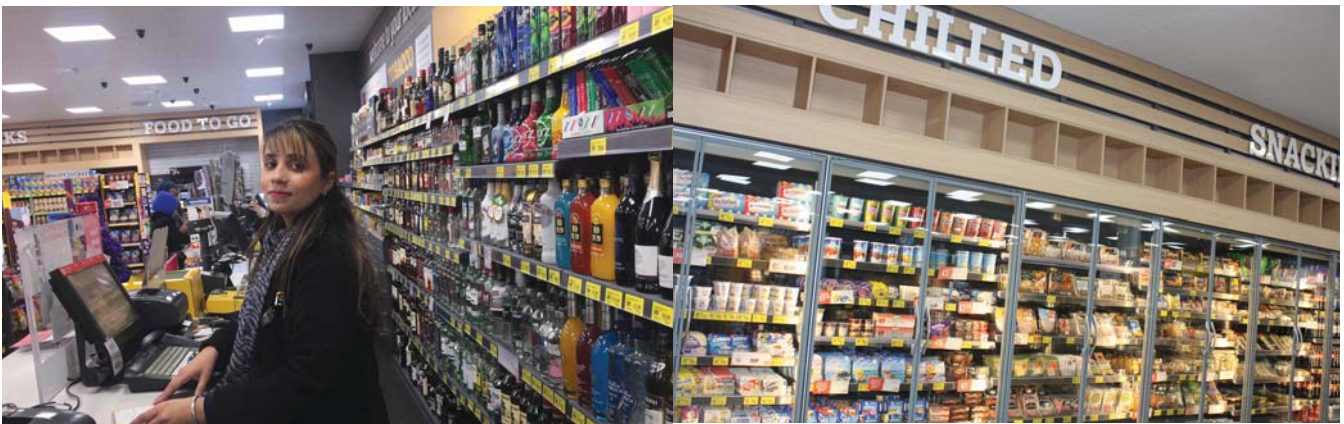
For an application form or further enquiries contact us on
01582 512555 or email: info@marshfarmfutures.co.uk



Local Food Store opens its 'NEW' doors to Marsh Farm residents



Nisa Local started more than 20 years ago, providing convenience, supporting the local community by funding local causes/ events including annual Fireworks, Christmas Parties for Elders and creating 16 jobs.



In store services include Post Office, a free ATM, PayPoint, full range of fresh food, bakery and coffee to go. In addition a butchers, ethnic food, wine, beers and spirits.



Barry Patel, owner of the store has been involved at Marsh Farm for more than two decades. He is confident about the future and said: " I am proud of what the store has done during the last 20 years for local people.